

# 采购部门业务分析

采购金额  
41,123,973元

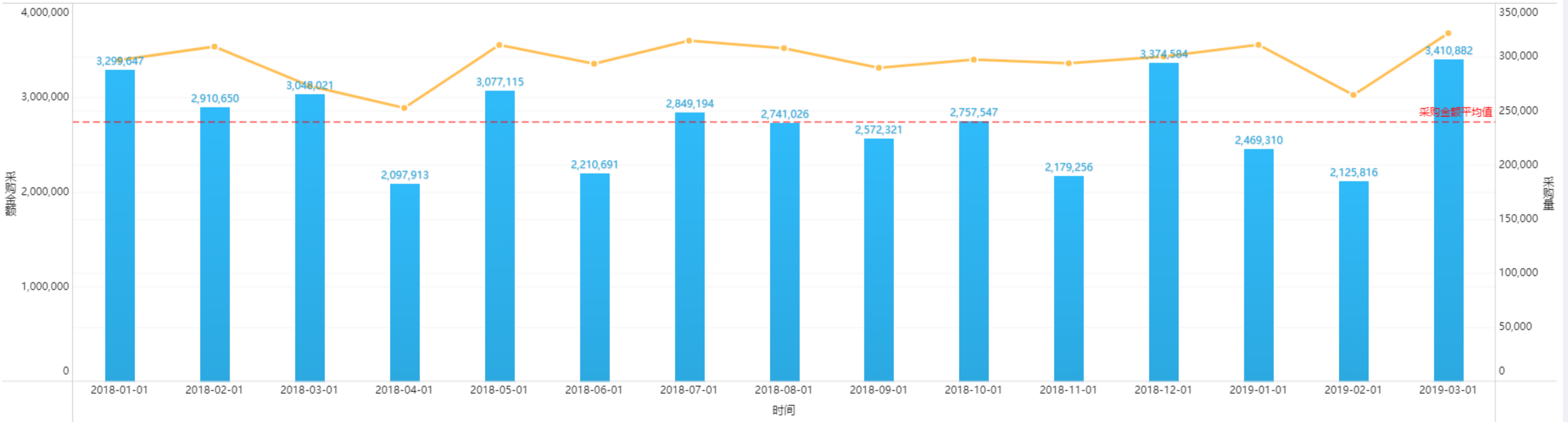
采购量  
4,440,544千克

原料合格率  
78.14%

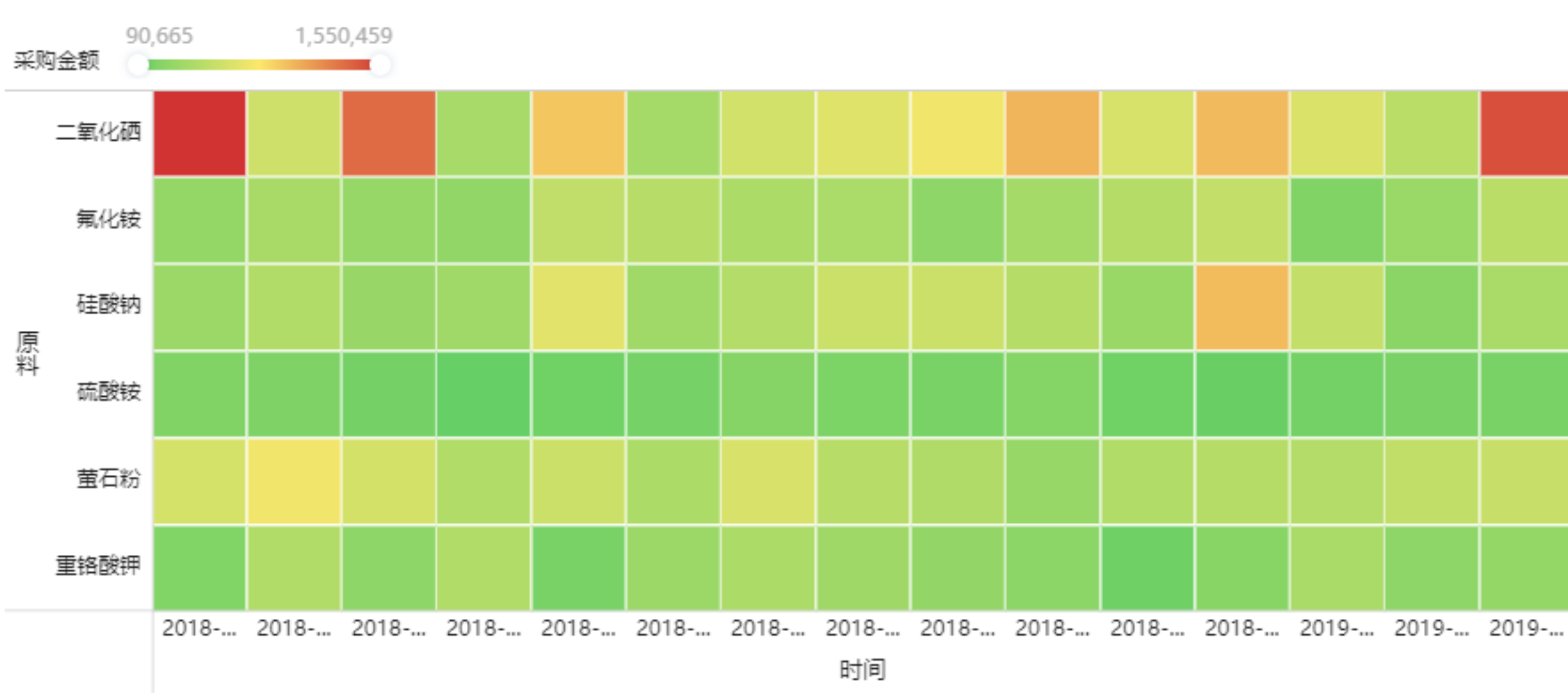
及时到货率  
86.40%

## 一、单价波动分析

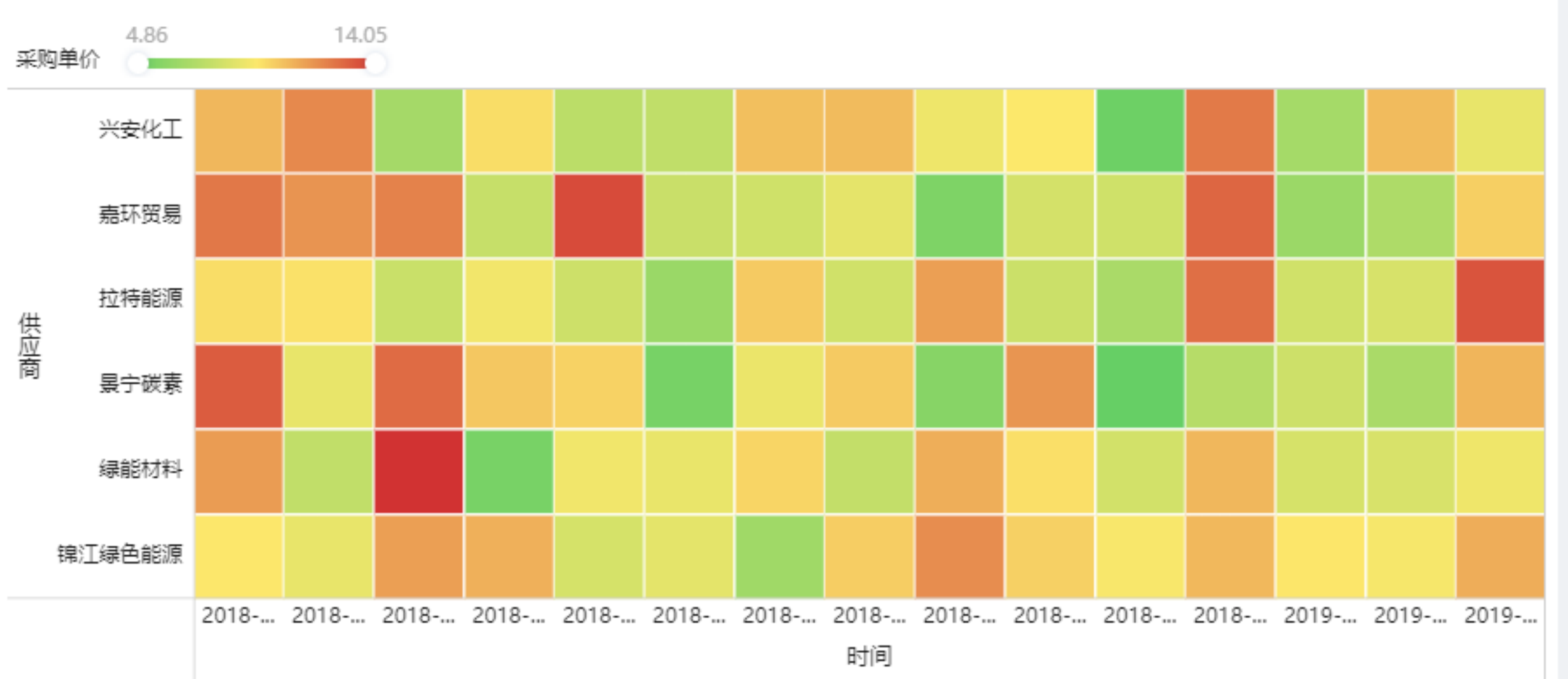
采购金额和采购量分析



采购总金额随时间的变化

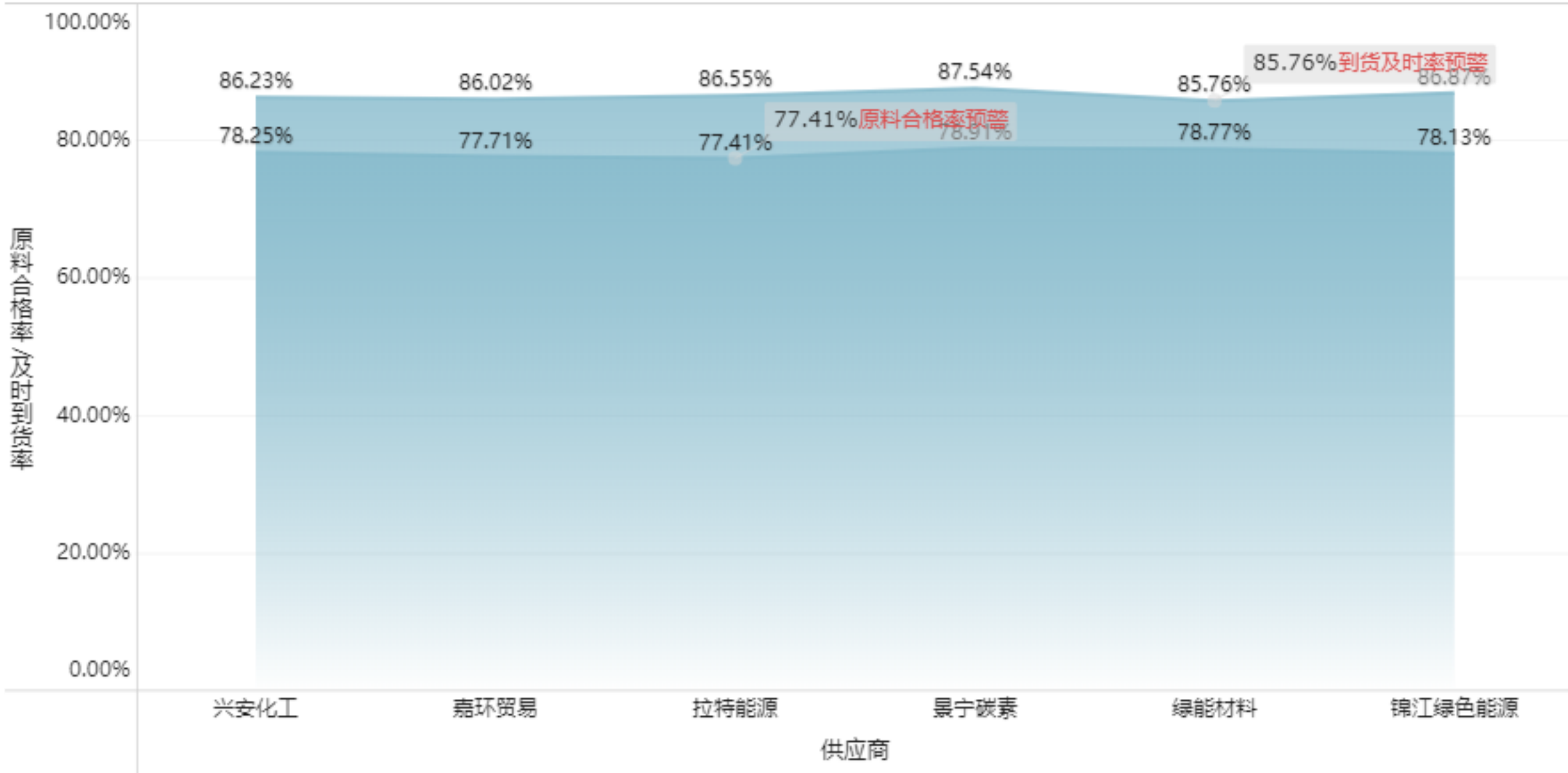


供应商单价随时间的变化

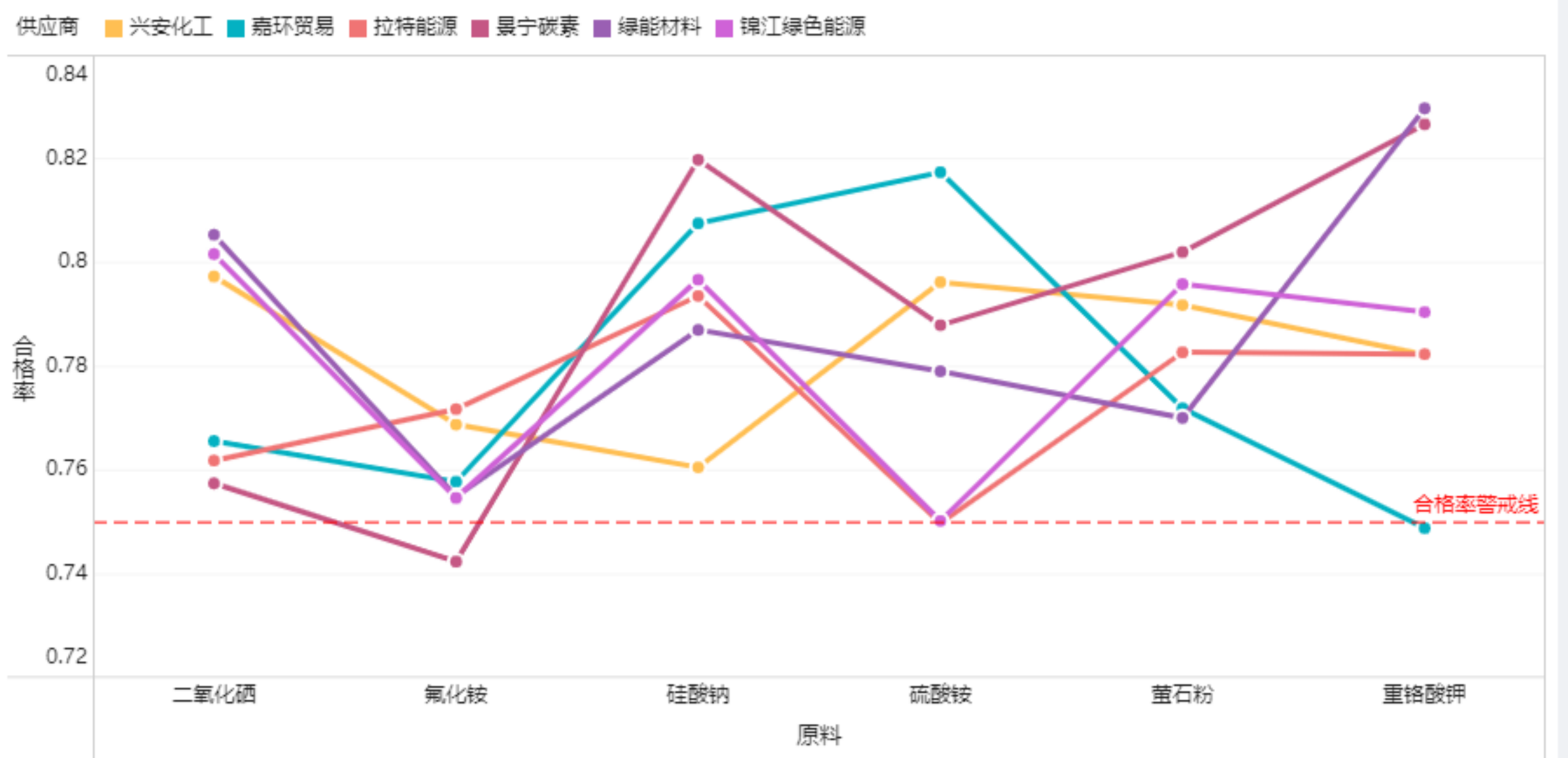


## 二、采购及时率和和合格率分析

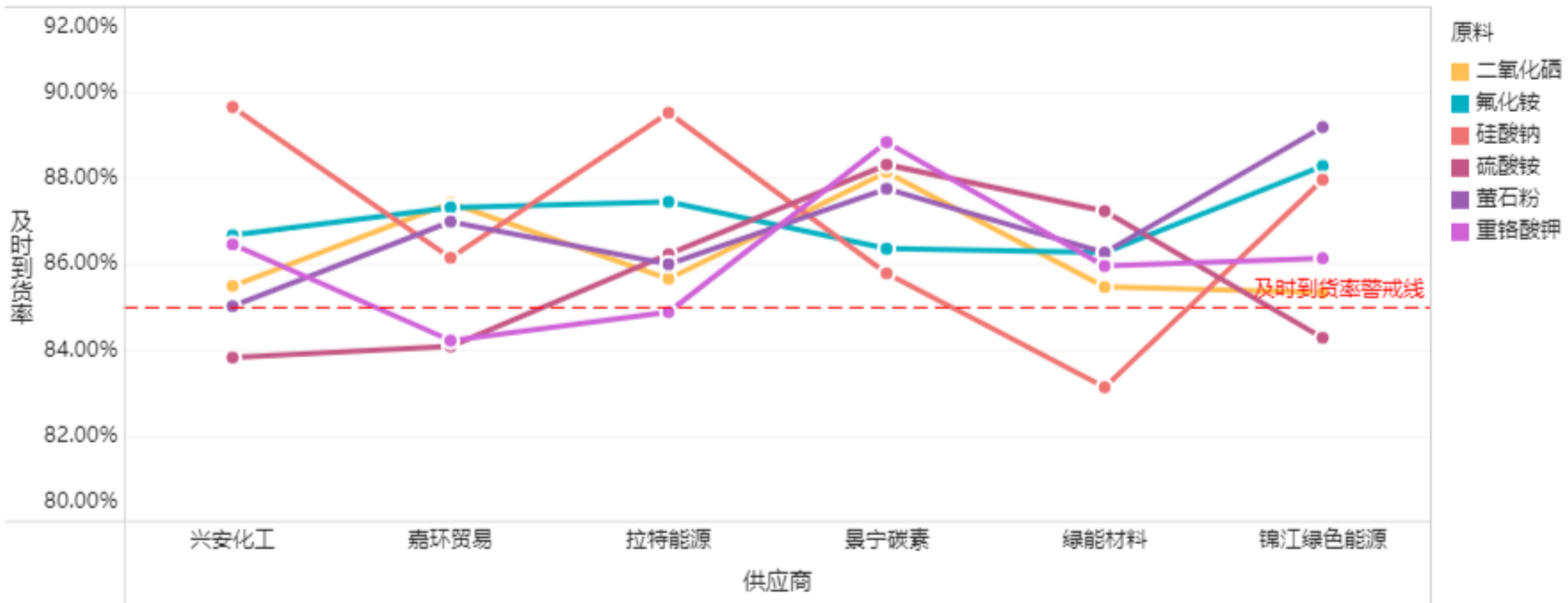
原料合格率和及时到货率预警看板



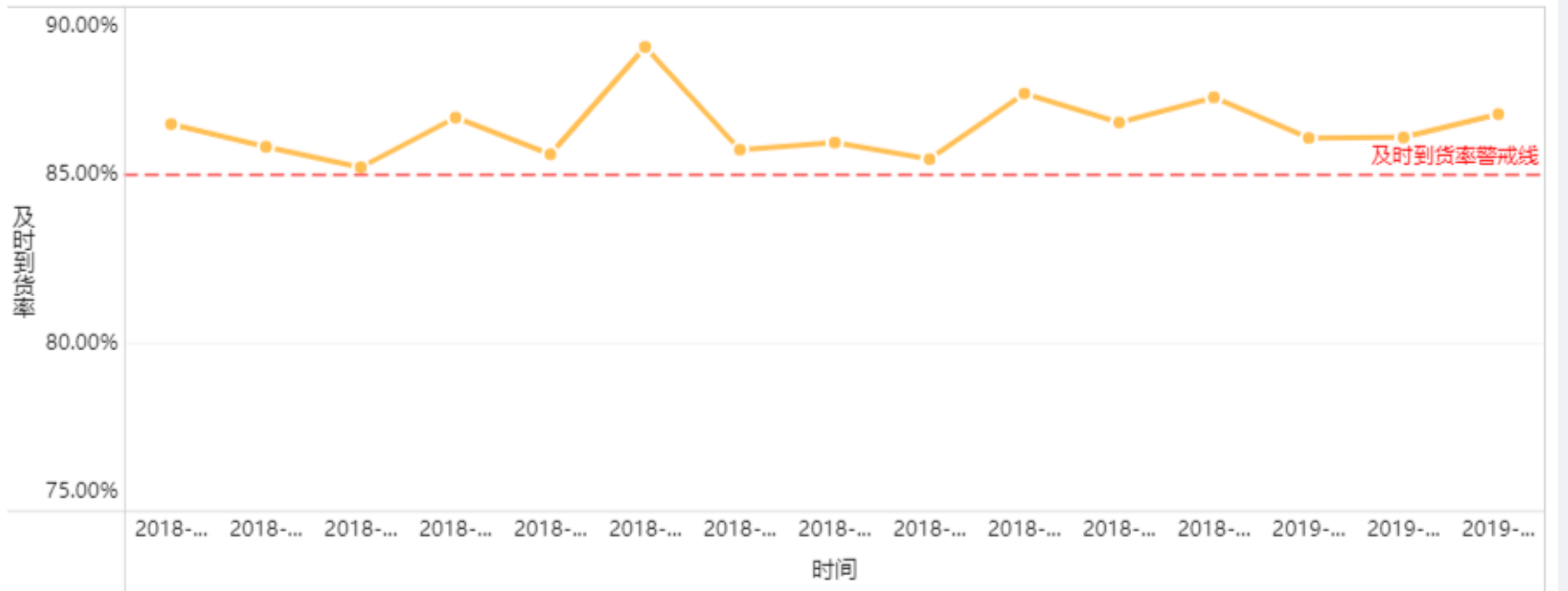
合格率分析



到货及时率分析



到货及时率分析1



## 三、紧急采购需求分析

各供应商采购量分析



未命名组件2

